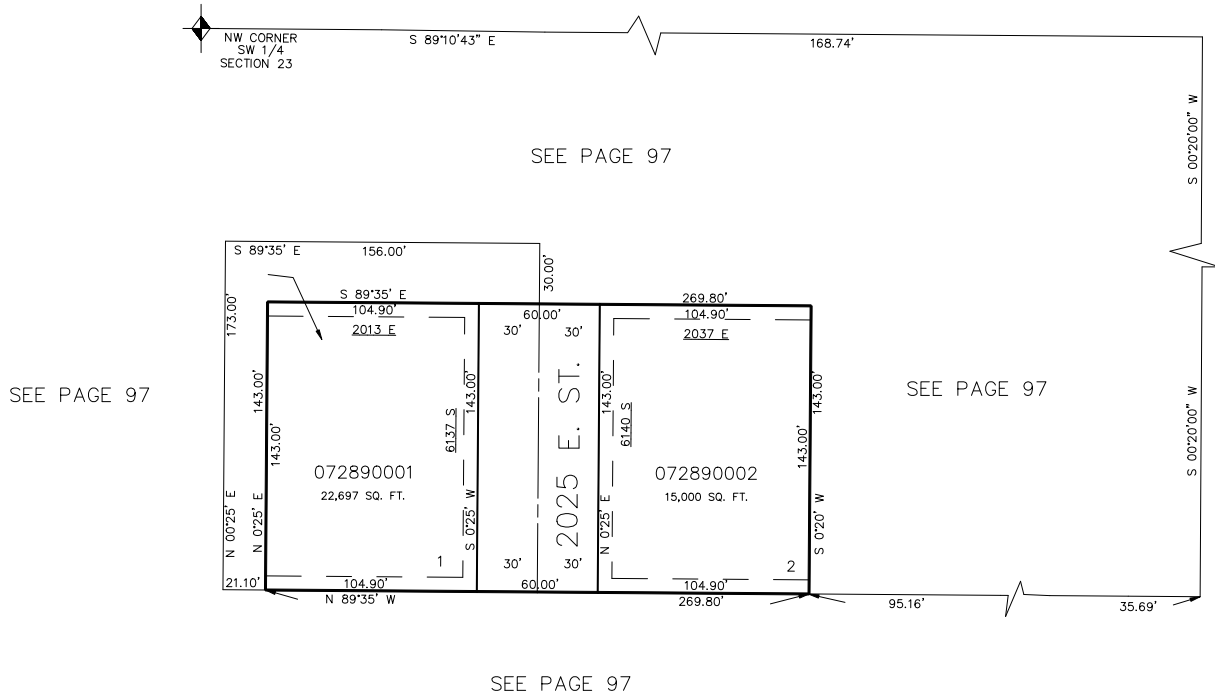


PART OF THE SW.1/4, SEC. 23, T.5N., R.1W., S.L.B. & M.
HIGH VIEW SUBDIVISION
 IN WEBER COUNTY
 SCALE 1" = 50'

289

TAXING UNIT: 159



FOR COMPLETE ENG DATA SEE
 ORIGINAL DEDICATION PLAT IN
 BOOK 26, PAGE 39 OF RECORDS.

7' UTILITY & DRAINAGE EASEMENTS EACH
 SIDE OF PROPERTY LINES AS INDICATED
 BY DASHED LINES EXCEPT AS OTHERWISE
 SHOWN.